



**Hangcha Europe GmbH**

Mariechen-Graulich-Straße 12a,  
65439 Flörsheim am Main,  
Germany

Tel: 0049-61453769188  
E-mail: admin@hangchaeurope.com

Mob: 0049-16096548808 (Thomas Dittrich)  
E-mail: thomas.dittrich@hangchaeurope.com  
Zip Code Area (1,2,3,4,5,6,7)

Mob: 0049-1605272481 (Jens Abmuth)  
E-mail: jens.assmuth@hangchaeurope.com  
Zip Code Area (0,8,9)

www.hangchaeurope.com



Follow us on  
Instagram



Follow us on  
Facebook



Follow us on  
YouTube



Download "Hangcha  
Forklift" App



ISO14001  
ISO14001:2015



ISO9001  
ISO9001:2015



HANGCHA trucks conform  
to the European Safety  
Requirements.

2020 VERSION 1/COPYRIGHT 2020/1.0

HANGCHA GROUP CO., LTD. reserves the right to make any changes without notice concerning colors, equipment, or specifications detailed in this brochure, or to discontinue individual models. The colors of trucks, delivered may differ slightly from those in brochures.



## A Series High Capacity Electric Forklift Truck

with capacities of 14,000 to 16,000kg

*The World of Hangcha*



# A Series 14-16t Electric Forklift Truck

The electric forklift truck, with key parts of associated products from world-renowned manufacturers, features excellent performance, reliability and durability, high safety, as well as elegant, steady, simple but bright appearance. The product can be applied for a wide range of purposes, and is suitable for various working conditions including indoor and outdoor spaces.

**Efficient/  
Durable/  
Ergonomic**



## Drive System

/ The AC travel motor of world-renowned brand features strong power, complete protection functions, and is maintenance-free, with substantially increased reliability and service life, and reduced maintenance and service costs; the heavy-duty drive axle of world-renowned brand features two-stage reduction, dual motor drive, multi-plate wet travel brake and motor auxiliary brake, safety and reliability, and the system is fully enclosed, maintenance-free, and suitable for heavy-duty working condition.

## Hydraulic System

/ The system is equipped with electro-hydraulic proportional sectional valve of world-renowned brand, silent gear pump, pilot electric control handle, and AC oil pump motor. The load sensing hydraulic system reduces continuous load on oil pump motor; the remote electric control operating mode is simple, easy, and flexible. Several hydraulic pressure detection points are added to simplify maintenance and service work.

## Mast System

/ The duplex mast has increased width, higher resistance to torsion, and broader view; oil circuit with dual governing valves features higher safety. Hydraulic fork width adjustment is a standard configuration.

## Braking System

/ The system is equipped with Poclair hydraulic brake valve, multi-plate wet travel brake and spring action, and hydraulic release caliper disc parking brake system.

## Steering System

/ The system is equipped with horizontally placed oil cylinder steering axle of single dual-action oil cylinder, features fully hydraulic power steering, steering priority, with load sensing function, and can realize easy steering.



You can open the door on each side, it make the motor, oil pump and electrical controller maintenance is very convenient, provide good waterproof and dustproof



It's very easy for charging the battery



The tippable structure that is available for both electric and manual operations is convenient for daily maintenance



The integrated fan cooling system ensures the stability of the electric control system, and the fully opened hood make the maintenance more convenient



A series features battery side roll out as standard



## Electric System

/ The full AC controller of state of the art in the world is adopted, achieving electronic control for traveling, lifting, braking, and steering actions of the forklift. It features smooth and accurate control, superior speed regulation performance, with regenerative braking, reverse braking, and anti-slipping on slope and other functions, enabling more effective operation, higher safety and comfort. The MMI instrument of world-leading brand is adopted, with large screen LCD battery indication, timing, failure self-diagnosis, and mode selection, and accurate display even in severe environment. The LED lighting system is adopted for energy saving.



## Cabin

/ The cabin is integrated and fully enclosed. Four-point rubber vibration-reducing connection of the cab can reduce vibration, and its tippable structure that is available for both electric and manual operations is convenient for daily maintenance; spacious cab floor, and ample overhead clearance and leg room allow easy access and exit of the driver at any time; the fully enclosed cab is thermally insulated, dust-proof, and waterproof; sliding curtain is provided inside the cab; filler is equipped at inlet of fresh air, and the internal recycling fan is adjustable. Comfortable temperature can be maintained in the cab with air conditioner and hot air device. The seat is forward and backward adjustable, tilting angle of seat back is also adjustable, which can increase comfort level for the driver. All glass is of safety glass. Front, rear, and top windscreens are equipped with cleaner and wiper. Both front and rear windscreens are equipped with defroster.

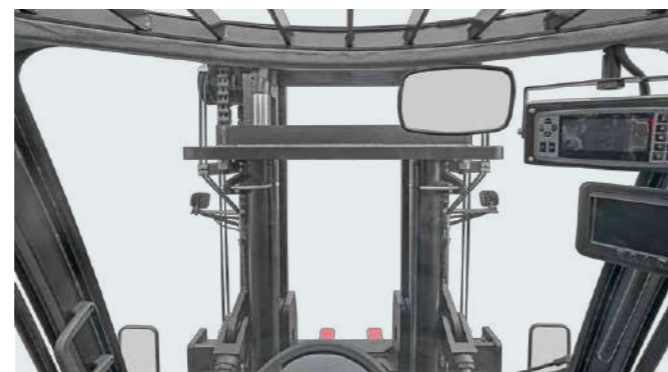


## Standard specification

- |                                    |   |
|------------------------------------|---|
| / Handle                           | / Up & down tiltable steering column      |
| / Headlight guard                  | / Rearview mirror                         |
| / Air conditioning                 | / On-truck tool kit                       |
| / Sideshifter and fork positioner  | / Inclined oil circuit self-closing valve |
| / Cab                              | / Four-section multi-way valve            |
| / Fully-hydraulic power steering   | / Lifting oil circuit speed limit valve   |
| / Traction pin                     | / Hydraulic oil tank level indicator      |
| / Front combined lamps             | / Key switch                              |
| / Rear combined lamps              | / OPS system                              |
| / Headlamp                         | / Alarm light                             |
| / Electric horn                    | / Backup buzzer                           |
| / Multi-functional colored display | / Wide-view mast                          |
| / Neutral switch                   | / Rubber pedal pad                        |
| / Patterned oil resistant tire     |   |

## Options

- / Customized color
- / Solid tire / environmentally friendly solid tire
- / Work lamp
- / Other sizes of fork
- / Rearview system
- / Battery charger

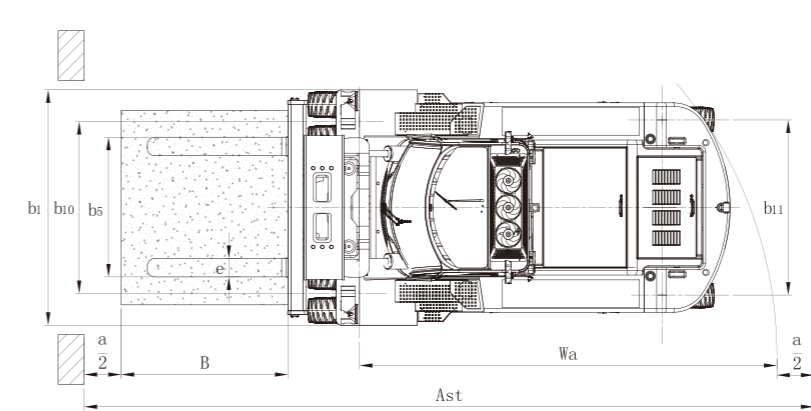
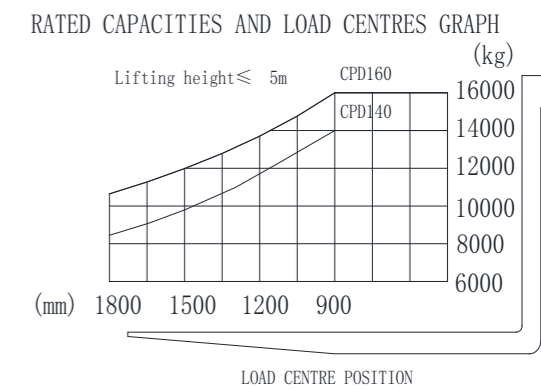
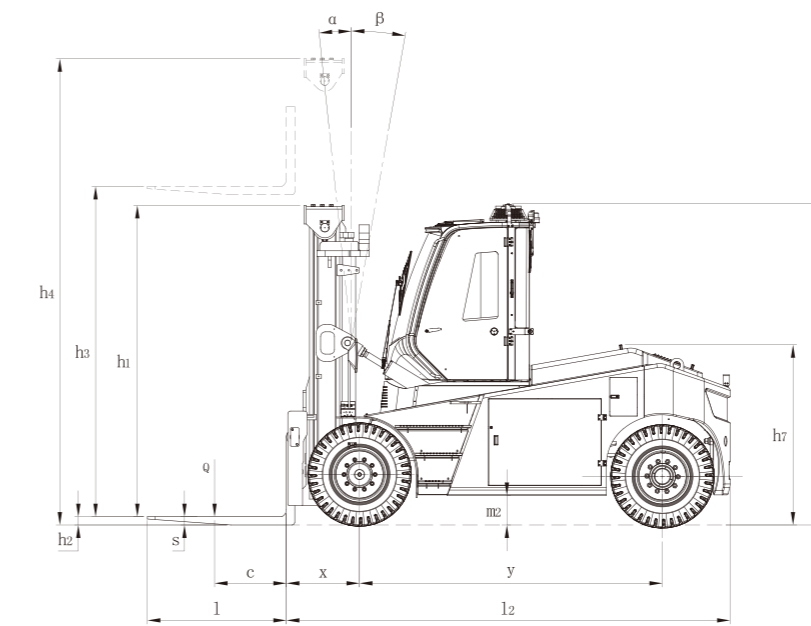


# A Series 14-16t Electric Forklift Truck

		HANGCHA GROUP CO.,LTD.	
Distinguishing mark	1.1	Manufacturer	
	1.2	Manufacturer's type designation	CPD140-AZ4 CPD160-AZ4
	1.3	Drive: electric (battery or mains), diesel, petrol, fuel gas	Electric Electric
	1.4	Operator type: hand, pedestrian, standing, seated, order-picker	Seated Seated
	1.5	Rated capacity/rated load	Q (kg) 14000 16000
	1.6	Load centre distance	c (mm) 900 900
	1.8	Load distance, centre of drive axle to fork	x (mm) 861 861
	1.9	Wheelbase	y (mm) 3250 3600
	Weight	2.1	Service Weight
2.2		Axle loading, laden front/rear	kg 34300/3200 37100/3400
2.3		Axle loading, unladen front/rear	kg 12700/10800 13400/11100
Tyres, chassis	3.1	Tyres: solid rubber, superelastic, pneumatic, polyurethane	Peumatic Peumatic
	3.2	Tyre size, front	12.00-20-20PR 12.00-20-20PR
	3.3	Tyre size, rear	12.00-20-20PR 12.00-20-20PR
	3.5	Wheels, number front / rear (x = driven wheels)	4/2 4/2
	3.6	Tread, front	b10 (mm) 1856 1856
	3.7	Tread, rear	b11 (mm) 1890 1890
	Dimensions	4.1	Tilt of mast/fork carriage forward/backward
4.2		Height, mast lowered	h1 (mm) 3450 3450
4.3		Free lift	h2 (mm) 90 90
4.4		Lift	h3 (mm) 3300 3300
4.5		Height, mast extended	h4 (mm) 5100 5100
4.7		Height of overhead guard (cabin)	h6 (mm) 3470 3470
4.8		Seat height/stand height	h7 (mm) 2115 2115
4.12		Coupling height	h10 (mm) 590 590
4.19		Overall length	l1 (mm) 6660 6990
4.20		Length to face of forks	l2 (mm) 4860 5190
4.21		Overall width	b1 (mm) 2540 2540
4.22		Fork dimensions	s/e/l (mm) 90/250/1800 90/250/1800
4.24		Fork-carriage width	b3 (mm) 2430 2430
4.25		Distance between fork-arms	bs (mm) 750-2200 750-2200
4.31		Ground clearance, laden, below mast	m1 (mm) 250 250
4.32		Ground clearance, centre of wheelbase	m2 (mm) 295 295
4.34.1		Aisle width for pallets 1000 x 1200 crossways	Ast (mm) 7311 7761
4.34.2		Aisle width for pallets 800 x 1200 lengthways	Ast (mm) 7311 7761
4.35		Turning radius	Wa (mm) 4450 4900
4.36		Internal turning radius	b13 (mm) 320 560
Performance data	5.1	Travel speed, laden/unladen	km/h 16/18 16/18
	5.2	Lift speed, laden/unladen	m/s 0.24/0.33 0.22/0.33
	5.3	Lowering speed, laden/unladen	m/s 0.35/0.30 0.35/0.30
	5.5	Drawbar pull, laden/unladen	N 40000 40000
	5.6	Max. Drawbar pull, laden/unladen	N 48000 48000
	5.7	Gradeability, laden/unladen	% 8/15 7/14
	5.8	Max. gradeability, laden/unladen	% 10/17 9/16
	5.9	Acceleration time, laden/unladen (0-10m)	s 3.5/3.0 3.5/3.0
	5.10	Service brake	Hydraulic Hydraulic
		Parking brake	Electric Electric
Electric-engine	6.1	Drive motor rating S2 60 min	kW 2x34 2x34
	6.2	Lift motor rating at S3 15%	kW 2x47 2x47
	6.4	Battery voltage, nominal capacity K5	V/Ah 120/1650 120/1800
	6.5	Battery weight	kg 2x3050 2x3550
		Battery dimensions	l/b/h(mm) 1210/1073/853 1530/1032/857
	6.6	Energy consumption acc. to VDI cycle	kWh/h 24 27
		Max. battery weight	kg 6100 7100
	Min. battery weight	kg 5800 6800	
8.1	Type of drive unit		MOFET MOFET
9.1	Manufacturer/Type		ZAPI ZAPI
Addition data	10.1	Operating pressure for attachments	bar 150 150
	10.2	Oil volume for attachments	l/min 60 60
	10.3	Hydraulic Tank - capacity (drain & refill)	liter 220 220
	10.7	Sound pressure level at the driver's seat	dB (A) 70 70
	10.8	Towing coupling, type DIN 15170	PI $\phi$ 50 $\phi$ 50

# 14-16t Mast specification

Type	Model	Max.fork height mm	Overall height		Tilt Range FwD/RwD ( $^{\circ}$ )	Capacity Load capacity at 900mm kg
			Lowered mm	Extended mm		
AP141MX	AP141M300	3000	3300	4800	5/10	14000
	AP141M330	3300	3450	5100	5/10	14000
	AP141M360	3600	3600	5400	5/10	14000
	AP141M400	4000	3800	5800	5/10	14000
	AP141M430	4300	4000	6150	5/10	14000
	AP141M450	4500	4100	6350	5/10	14000
	AP141M480	4800	4250	6650	5/6	14000
	AP141M500	5000	4350	6850	5/6	14000
	AP141M550	5500	4650	7400	3/6	12500
	AP141M600	6000	4900	7900	3/6	11000
AP161MX	AP141M650	6500	5200	8450	3/6	9500
	AP161M300	3000	3300	4800	5/10	16000
	AP161330	3300	3450	5100	5/10	16000
	AP161360	3600	3600	5400	5/10	16000
	AP161400	4000	3800	5800	5/10	16000
	AP161430	4300	4000	6150	5/10	16000
	AP161450	4500	4100	6350	5/10	16000
	AP161480	4800	4250	6650	5/6	16000
	AP161500	5000	4350	6850	5/6	16000
	AP161550	5500	4650	7400	3/6	14500
AP161600	6000	4900	7900	3/6	13000	
AP161650	6500	5200	8450	3/6	11500	



AST=B+Wa+x+a  
a=200mm Safety clearance